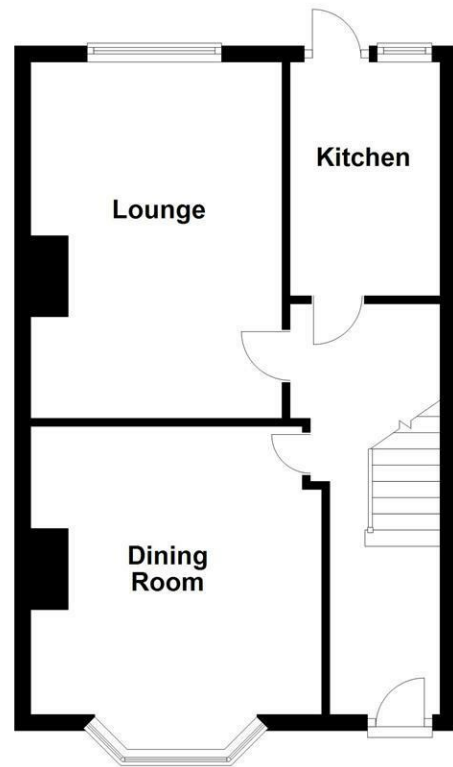
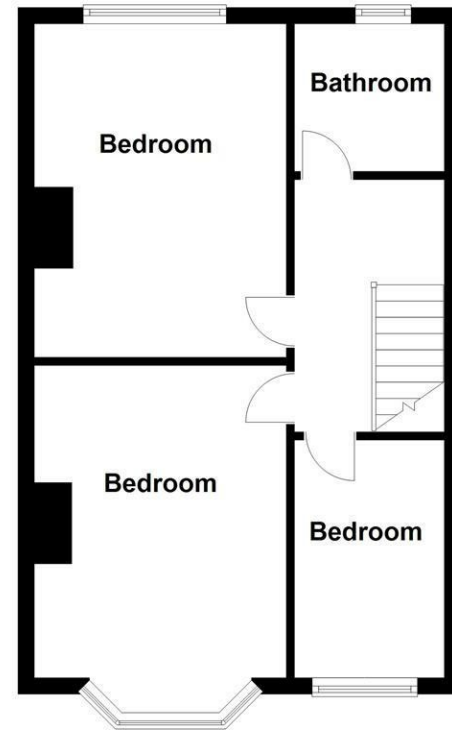




Ground Floor
Approx. 40.9 sq. metres (439.8 sq. feet)



First Floor
Approx. 41.0 sq. metres (441.6 sq. feet)



Total area: approx. 81.9 sq. metres (881.4 sq. feet)

Whilst every attempt has been made to ensure the accuracy of this floor plan, measurements of doors, windows, rooms and any other items are approximate and no responsibility is taken for any error, omission or mis-statement. The plan is for illustrative purposes only and should be used as such by any prospective purchaser. The services, systems and appliances shown here have not been tested and no guarantee to their operability or efficiency can be given.
Plan produced using PlanUp.

Collingwood Road, Bebington, Wirral CH63 7RL

Offers Over £185,000

3 Bedroom 2 Reception 1 Bathroom

Three Bed Mid Terrace - Ideal First Time Buy - Close To Local Amenities - No Chain

Hewitt Adams is delighted to bring to the market this THREE BEDROOM mid terrace property on Collingwood Road in Bebington. Ideally situated close to the local amenities of Bebington Village and Port Sunlight train station.

This PERFECT FIRST TIME BUY has the added bonus of being sold with NO ONWARD CHAIN!!

In brief the property affords: hall, lounge, dining room, kitchen. Upstairs there are three bedrooms and a bathroom.

Externally, there is on street parking and a quaint rear courtyard.

Call Hewitt Adams to booking your viewing today!!

Front Entrance

Into:

Hall

Stairs to first floor, radiator, power point

Lounge

10'2" x 14'4" (3.10 x 4.39)

Double glazed window, radiator, power point

Dining Room

11'9" x 11'7" (3.59 x 3.55)

Double glazed bay window, radiator, power point

Kitchen

6'0" x 9'5" (1.85 x 2.88)

Wall and base units, inset sink, integrated oven and electric hob, space and plumbing for washing machine, space for fridge, door to rear

First Floor

Bedroom One

10'2" x 12'7" (3.11 x 3.85)

Double glazed bay window, radiator, power point

Bedroom Two

10'2" x 13'5" (3.12 x 4.11)

Double glazed window, radiator, power point

Bedroom Three

6'0" x 9'7" (1.85 x 2.93)

Double glazed window, radiator, power point

Bathroom

5'11" x 5'11" (1.82 x 1.82)

Comprising bath with shower above, wash hand basin, W.C, towel rail, part tiled walls

Externally

With on street parking to the front and a rear courtyard.

